



# Bring the Complete Allergy Solution Home to Your Practice.

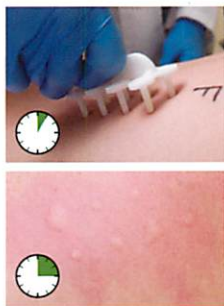
With 40-50% of patients sensitized to at least one antigen, allergies are reaching epidemic proportions. The World Allergy Organization urges that “One of the main aspects of good allergy practice is to find the cause and prevent symptoms and disease progression, rather than just rely on medications to suppress the symptoms.” A comprehensive allergy program is a central component to the medical home. Allergy is a primary care problem.

## Program Includes...

### Point of Care (CLIA-free) allergy skin tests

Allergy skin testing performed in your clinic by your staff:

- The gold-standard in allergy diagnosis
- Safe for patients of all ages
- Less than one minute to apply
- Results in 15 minutes
- No lab equipment (no lab control processes or certifications required)
- No needles
- Customized panels include regional inhalants and common foods
- Billable procedure (95004 x number of antigens applied)



### The opportunity for long-term relief

Patient-specific immune-modulating treatment that prevents the progression of disease: Needle-free, home-based SLIT (sublingual immunotherapy) and/or SCIT:

- All Natural
  - No medicine
  - No chemicals
  - No drug interactions
- Safe, effective, and endorsed by the World Allergy Organization, “SLIT is considered a viable alternative to SCIT”



*“Education at the general practice level is of paramount importance since the vast majority of patients with allergic diseases are cared for by primary care physicians and pediatricians.” World Allergy Organization*

### Comprehensive training and support

Provider-developed training and ongoing consultative services tailored to your clinic's needs and covering every member of your team:

- Hands-on technical skills for back office
- Face-to-face clinical instruction for providers
- One-on-one billing, marketing, and administrative guidance
- Front office basic knowledge exchange



### Complete allergy kits

Everything you need for start-up and up-keep in complete packages to facilitate your success:

- **Starter kit** (pays for itself with about 10 tests!):
  - Skin test applicators (for 20 tests)
  - Antigen (for approximately 200 tests)\*
  - Marketing materials
  - Patient education, result forms, measuring devices
  - Sample treatment sets
- **Refill kits:**
  - Skin test applicators (for 20 tests)
  - Result forms, reaction rulers, patient education, and marketing



### Extensive marketing support

Marketing materials and expert guidance to promote your allergy program to current patients and then reach out to potential new patients to enlarge the size of your practice.

- Brochures, posters, counter cards
- Videos
- Web Content
- Community Outreach